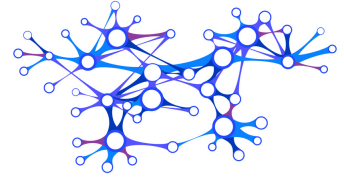


# Level 3 Special Project

## *Graphs*



|                       |            |
|-----------------------|------------|
| Prerequisite Concepts | Concept 12 |
| Key Concepts          | Concept 15 |

Write a Bricklayer program that uses the functions *map* and *tabular* to create a graph similar to the one shown below. Before building this artifact it is recommended that you complete all Vitruvia exercises for Concept 15.

